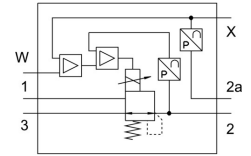


# Proportional pressure control valve VPPL-3Q-3-Z-0L20H-A4-A-S1-4

FESTO

Part number: 1635991



## Data sheet

Feature	Value
Nominal width pressurization	2.5 mm
Exhaust nominal width	2.5 mm
Type code	VPPL
Actuation type	Electrical
Sealing principle	Soft
Mounting position	Any Preferably upright
Structural design	Directly controlled piston regulator
Short-circuit protection	no
Safety instructions	VPPL safety position: if the power supply cable breaks, the outlet pressure will drop to 0 bar.
Symbol	00995268
Reverse polarity protection	for all electrical connections
Reset method	Mechanical spring
Type of control	Direct
Valve function	3-way proportional pressure control valve closed
Display type	LED display
Operating pressure	≤2 MPa
Operating pressure	≤20 bar
Pressure regulation range MPa	0.02 MPa ... 2 MPa
Pressure regulation range	0.2 bar ... 20 bar
Inlet pressure 1	0 bar ... 50 bar
Inlet pressure 1 MPa	0 MPa ... 5 MPa
Max. pressure hysteresis	0.3 bar
b-value	0.25
C value	0.8 l/sbar
Standard nominal flow rate	300 l/min
Switching time off	550 ms
On switching time	300 ms
DC operating voltage range	21.6 V ... 27.6 V
Duty cycle	100%
Max. electrical power consumption	26.7 W
Residual ripple	10 %
Analog output signal range	4 - 20 mA
Analog input signal range	4 - 20 mA
Setpoint/actual values	Current type 4–20 mA

Feature	Value
Operating medium	Compressed air as per ISO 8573-1:2010 [7:4:4] Inert gas
Information on operating and pilot media	Operation with oil lubrication not possible
Certification	c UL us - Listed (OL)
KC characters	KC EMC
CE marking (see declaration of conformity)	As per EU EMC directive
Corrosion resistance class (CRC)	2 - Moderate corrosion stress
LABS conformity	VDMA24364 zone III
Temperature of medium	5 °C ... 50 °C
Degree of protection	IP65
Ambient temperature	5 °C ... 50 °C
Product weight	1100 g
Linearity error in ± % FS	0.5 %FS
Temperature coefficient	0.04 %/K
Repetition accuracy in ± %FS	0.5 %FS
Electrical connection, diagnostic interface	Socket, M12, 5-pin, A-coded
Electrical connection IN	Plug, M12, 5-pin, A-coded
Electrical connection OUT	Plug, M12, 5-pin, A-coded
Type of mounting	With through-hole
Pneumatic connection 1	Flange G1/4
Pneumatic connection 2	Flange
Pneumatic connection 3	Flange
Note on materials	RoHS-compliant
Housing material	Wrought aluminum alloy Anodized